



Shree Guru Gobind Singh Ji Government College Paonta Sahib, District Sirmaur, Himachal Pradesh

2nd Cycle of NAAC Accreditation

Criterion 6 Governance, Leadership and Management

Key Indicator 6.5 Internal Quality Assurance System

Metric 6.5.3 Quality assurance initiatives of the institution

6.5.3 Feedback Analysis of Student Satisfaction Survey

Table of Contents

TABLE OF CONTENTS.....	1
METHODOLOGY.....	1
DATA ANALYSIS AND INTERPRETATION.....	2
1. HOW MUCH OF THE SYLLABUS WAS COVERED IN THE CLASS?.....	2
2. HOW WELL DID THE TEACHERS PREPARE FOR THE CLASSES?.....	3
3. HOW WELL WERE THE TEACHERS ABLE TO COMMUNICATE?.....	4
4. THE TEACHER'S APPROACH TO TEACHING CAN BE BEST DESCRIBED AS:.....	5
5. FAIRNESS OF THE INTERNAL EVALUATION PROCESS BY THE TEACHERS.....	6
6. WAS YOUR PERFORMANCE IN ASSIGNMENTS DISCUSSED WITH YOU?.....	7
7. THE INSTITUTE TAKES ACTIVE INTEREST IN PROMOTING INTERNSHIP STUDENT EXCHANGE, FIELD VISIT OPPORTUNITIES FOR STUDENTS.....	8
8. THE TEACHING AND MENTORING PROCESS IN YOUR INSTITUTION FACILITATES YOU IN COGNITIVE, SOCIAL, AND EMOTIONAL GROWTH.....	9
9. THE INSTITUTION PROVIDES MULTIPLE OPPORTUNITIES TO LEARN AND GROW.....	10
10. TEACHERS INFORM YOU ABOUT YOUR EXPECTED COMPETENCIES, COURSE OUTCOMES AND PROGRAMME OUTCOMES.....	11
11. YOUR MENTOR DOES A NECESSARY FOLLOW-UP WITH AN ASSIGNED TASK TO YOU.....	12
12. THE TEACHERS ILLUSTRATE THE CONCEPTS THROUGH EXAMPLES AND APPLICATIONS.....	13
13. THE TEACHERS IDENTIFY YOUR STRENGTHS AND ENCOURAGE YOU WITH PROVIDING RIGHT LEVEL OF CHALLENGES.....	14
14. TEACHERS ARE ABLE TO IDENTIFY YOUR WEAKNESSES AND HELP YOU TO OVERCOME THEM.....	15
15. THE INSTITUTION MAKES EFFORT TO ENGAGE STUDENTS IN MONITORING, REVIEW, AND CONTINUOUS QUALITY IMPROVEMENT OF THE TEACHING LEARNING PROCESS.....	16
16. THE INSTITUTE/TEACHERS USE STUDENT CENTRIC METHODS, SUCH AS EXPERIENTIAL LEARNING, PARTICIPATIVE LEARNING, AND PROBLEM-SOLVING METHODOLOGIES FOR ENHANCING LEARNING EXPERIENCES.....	17
17. TEACHERS ENCOURAGE YOU TO PARTICIPATE IN EXTRA-CURRICULAR ACTIVITIES.....	18
18. EFFORTS ARE MADE BY THE INSTITUTE/ TEACHERS TO INCULCATE SOFT SKILLS, LIFE SKILLS AND EMPLOYABILITY SKILLS TO MAKE YOU READY FOR THE WORLD OF WORK.....	19
19. WHAT PERCENTAGE OF TEACHERS USE ICT TOOLS SUCH AS LCD PROJECTOR, MULTIMEDIA, ETC. WHILE TEACHING?.....	20
20. THE OVERALL QUALITY OF TEACHING-LEARNING PROCESS IN YOUR INSTITUTE IS VERY GOOD.....	21
21. CONCLUSION:.....	22

Paonta

Internal Quality Assurance Cell (IQAC)
Shree Guru Gobind Singh Ji
Government College Paonta Sahib
Dist. Sirmaur (H.P.)-173025

Methodology

The curriculum feedback from students has been collected through structured questionnaire, which includes 20 questions on various aspects of college.

685 responses of Students' feedback forms on various aspects of college have been received from the students. A Five Point Likert Scale has been used with weights assigned from 1 to 5 to different levels as follows:

1= Strongly Disagree/ Highly Dissatisfied/ Lack/Very Bad

2= Disagree/ Dissatisfied/ Inadequate/Bad

3= Neutral / No Opinion/ Average

4= Agree/ Satisfied / Adequate/Good

5 = Strongly Agree/ Highly Satisfied/ Abundance/ Very Good

The range of each level is determined by the following formula:

Highest point on Likert Scale- Lowest Point on Likert Scale)/Number of Levels used

Therefore: Range= (5-1)/5 => 4/5 => 0.8

Hence,

Range for "Strongly Disagree/ Highly Dissatisfied/ Lack/Very Bad" is	1.0 to 1.8
Range for "Disagree/ Dissatisfied/ Inadequate/Bad" is	1.8 to 2.6
Range for "Neutral / No Opinion/ Average" is	2.6 to 3.4
Range for "Agree/ Satisfied / Adequate/Good" is	3.4 to 4.2
Range for "Strongly Agree/ Highly Satisfied/ Abundance/Very Good" is	4.2 to 5.0



Internal Quality Assurance Cell (IQAC)
Shree Guru Gobind Singh Ji
Government College Paonta Sahib
Dist. Sirmour (H.P.)-173025



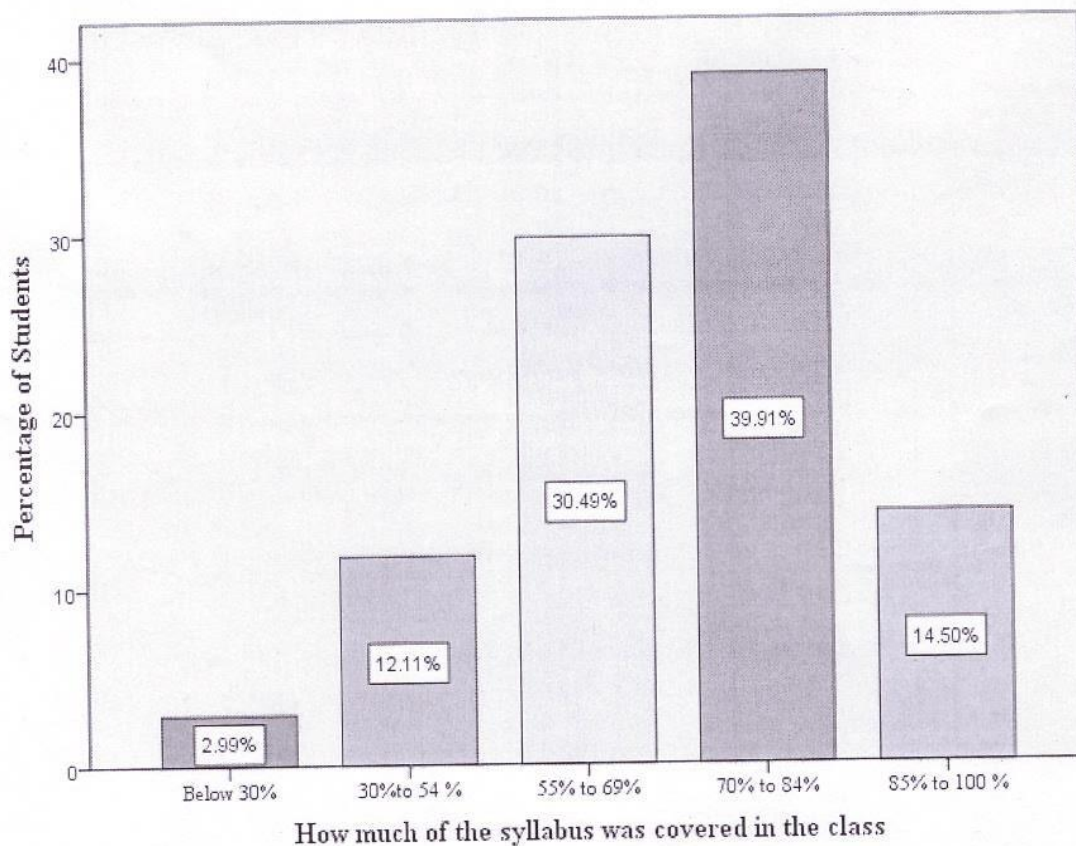
Dr. PRAMOD PATIAL
Principal
Shree Guru Gobind Singh Ji
Government College
Paonta Sahib
Dist. Sirmour (H.P.)-173025

Data Analysis and Interpretation

1. How much of the syllabus was covered in the class?

How much of the syllabus was covered in the class

	Valid					Total
	Below 30%	30 to 54 %	55 to 69%	70 to 84%	85 to 100 %	
Frequency	20	81	204	267	97	685
Percent	2.9	11.8	29.8	39.0	14.2	100.0
Weighted Mean Score						3.51



Just

Internal Quality Assurance Cell (IQAC)
 Shree Guru Gobind Singh Ji
 Government College Paonta Sahib
 Dist. Sirmour (H.P.)-173025



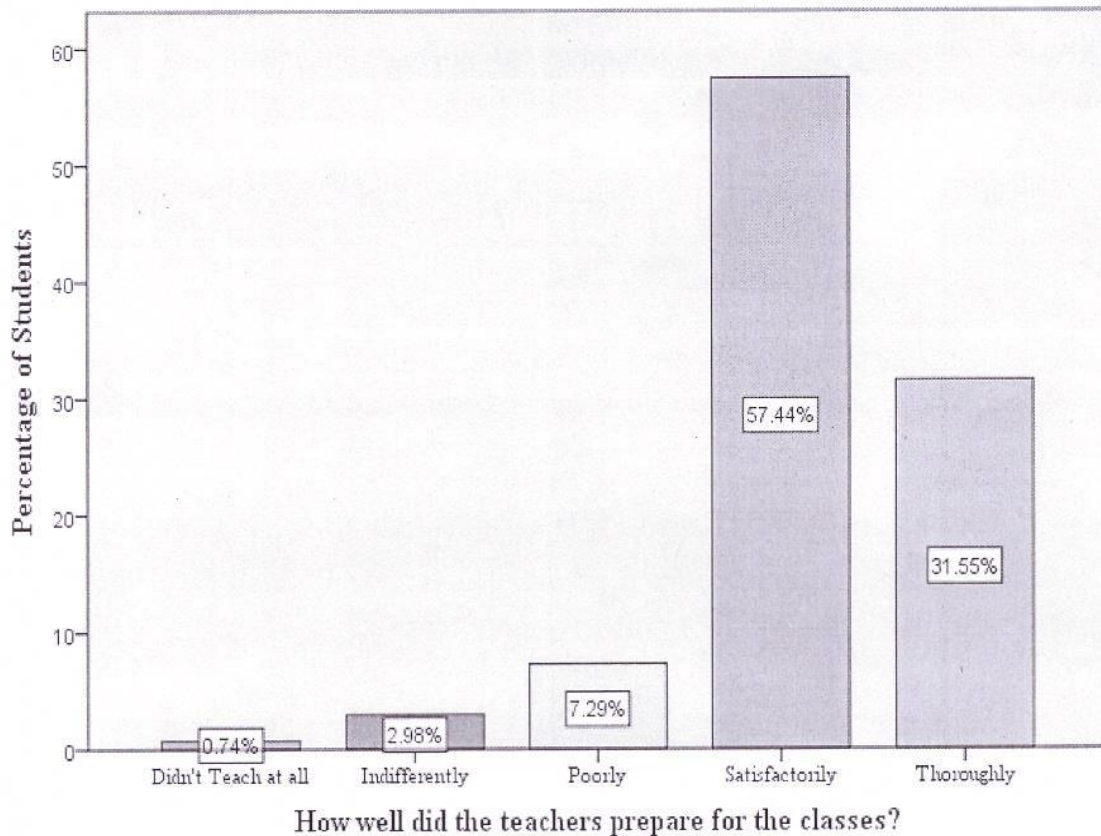
Patil

Dr. PRAMOD PATIAL
 Principal
 Shree Guru Gobind Singh Ji
 Government College
 Paonta Sahib
 Dist. Sirmour (H.P.)-173025

2. How well did the teachers prepare for the classes?

Table No. 2 How well did the teachers prepare for the classes?

	Valid						Missing	Total
	Didn't Teach at all	Indifferently	Poorly	Satisfactorily	Thoroughly	Total	System	
Frequency	5	20	49	386	212	672	13	685
Percent	.7	2.9	7.2	56.4	30.9	98.1	1.9	100.0
Weighted Mean Score								4.16



[Signature]
 Internal Quality Assurance Cell (IQAC)
 Shree Guru Gobind Singh Ji
 Government College Paonta Sahib
 Dist. Sirmour (H.P.)-173025

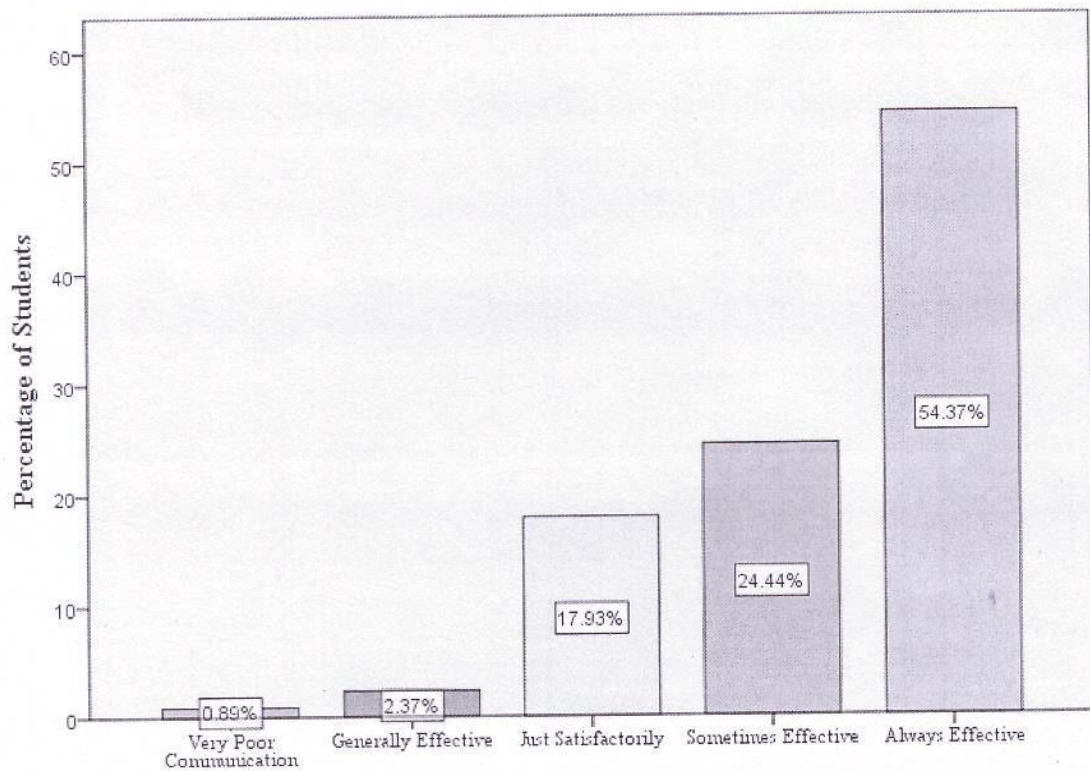


[Signature]
Dr. PRAMOD PATIAL
 Principal
 Shree Guru Gobind Singh Ji
 Government College
 Paonta Sahib
 Dist. Sirmour (H.P.)-173025

3. How well were the teachers able to communicate?

Table No. 3 How well were the teachers able to communicate?

	Valid						Missing	Total
	Very Poor Communication	Generally Effective	Just Satisfactorily	Sometimes Effective	Always Effective	Total	System	
Frequency	6	16	121	165	367	675	10	685
Percent	.9	2.3	17.7	24.1	53.6	98.5	1.5	100.0
Weighted Mean Score								4.29



How well were the teachers able to communicate?

Handwritten signature
 Internal Quality Assurance Cell (IQAC)
 Shree Guru Gobind Singh Ji
 Government College Paonta Sahib
 Dist. Sirmour (H.P.)-173025

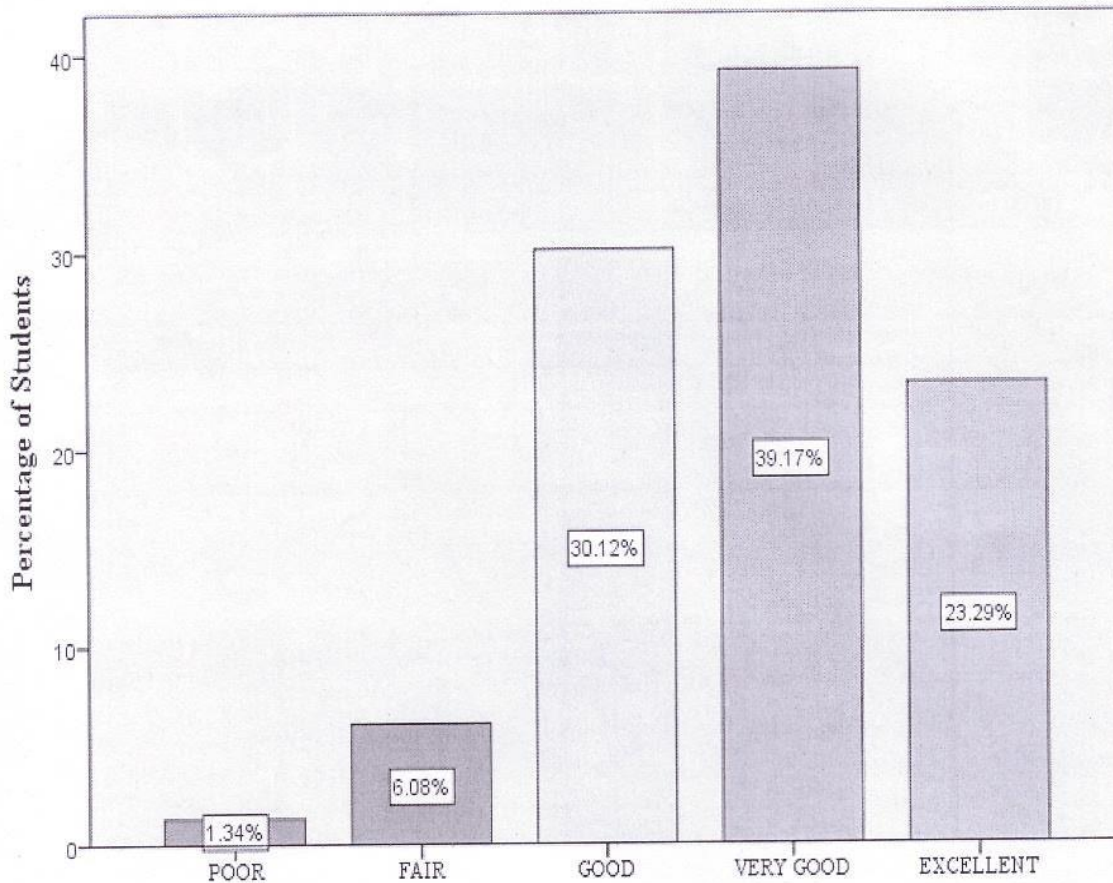


Handwritten signature: Active
Dr. PRAMOD PATIAL
 Principal
 Shree Guru Gobind Singh Ji
 Government College
 Paonta Sahib
 Dist. Sirmour (H.P.)-173025

4. The teacher's approach to teaching can be best described as:

Table No. 4 The teacher's approach to teaching can be best described as

	Valid					Total	Missing	Total
	POOR	FAIR	GOOD	VERY GOOD	EXCELLENT		System	
Frequency	9	41	203	264	157	674	11	685
Percent	1.3	6.0	29.6	38.5	22.9	98.4	1.6	100.0
Weighted Mean Score								3.77



The teacher's approach to teaching can best be described as:

[Signature]
 Internal Quality Assurance Cell (IQAC)
 Shree Guru Gobind Singh Ji
 Government College Paonta Sahib
 Dist. Sirmour (H.P.)-173025

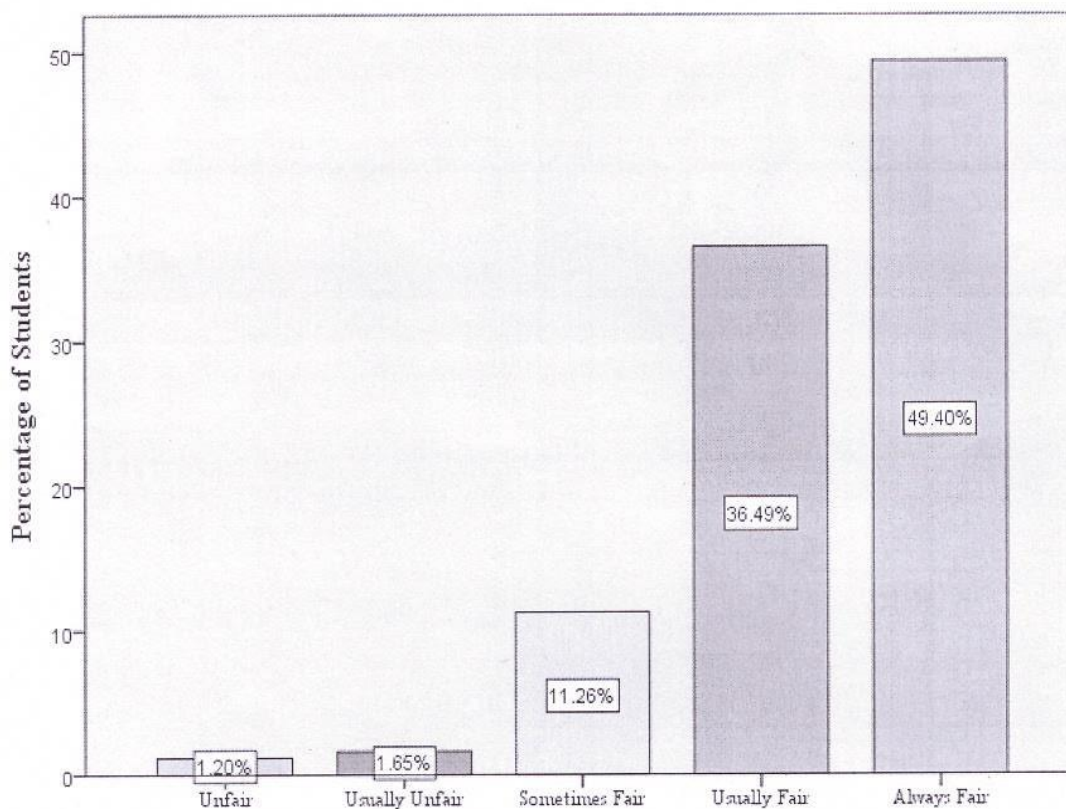


[Signature]
Dr. PRAMOD PATIAL
 Principal
 Shree Guru Gobind Singh Ji
 Government College
 Paonta Sahib
 Dist. Sirmour (H.P.)-173025

5. Fairness of the internal evaluation process by the teachers.

Table No. 5 Fairness of the internal evaluation process by the teachers.

	Valid						Missing	Total
	Unfair	Usually Unfair	Sometimes Fair	Usually Fair	Always Fair	Total	System	
Frequency	8	11	75	243	329	666	19	685
Percent	1.2	1.6	10.9	35.5	48.0	97.2	2.8	100.0
Weighted Mean Score								4.31



Fairness of the internal evaluation process by the teachers.

Pustika
 Internal Quality Assurance Cell (IQAC)
 Shree Guru Gobind Singh Ji
 Government College Paonta Sahib
 Dist. Sirmour (H.P.)-173025

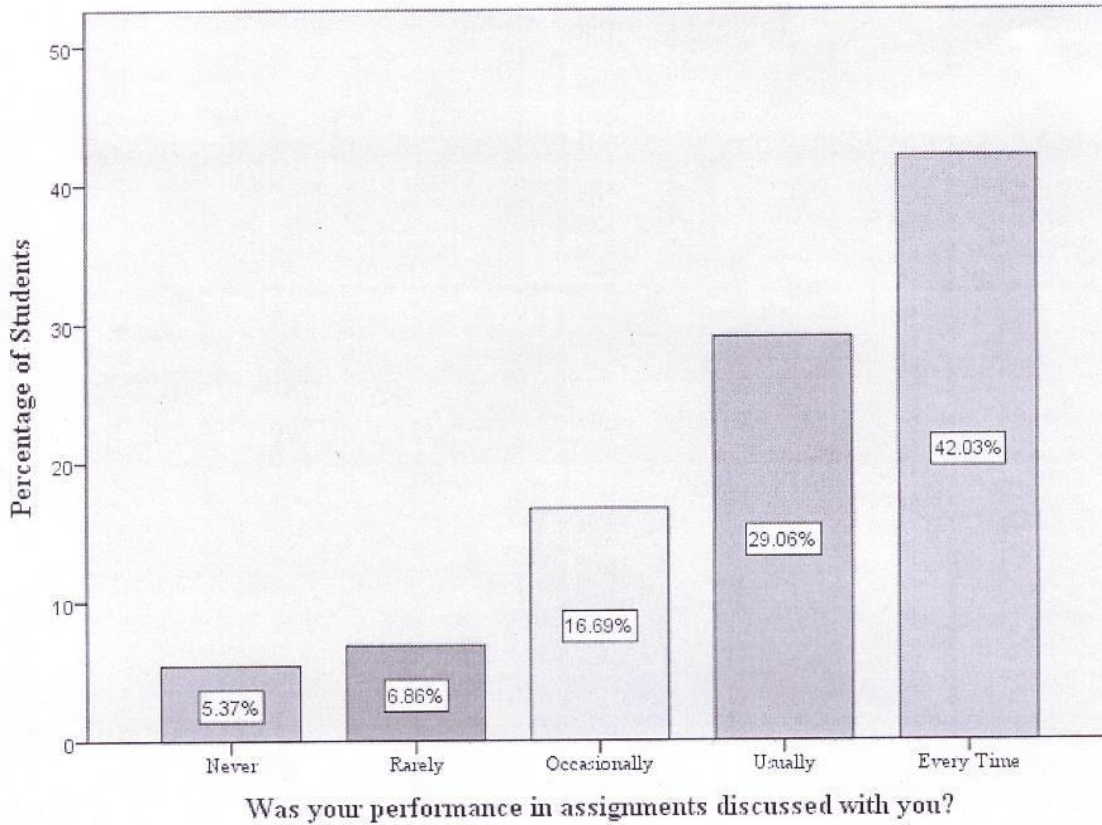


Patel
Dr. PRAMOD PATIAL
 Principal
 Shree Guru Gobind Singh Ji
 Government College
 Paonta Sahib
 Dist. Sirmour (H.P.)-173025

6. Was your performance in assignments discussed with you?

Table No. 6 Was your performance in assignments discussed with you?

	Valid						Missing	Total
	Never	Rarely	Occasionally	Usually	Every Time	Total	System	
Frequency	36	46	112	195	282	671	14	685
Percent	5.3	6.7	16.4	28.5	41.2	98.0	2.0	100.0
Weighted Mean Score								3.96



Pushpa
 Internal Quality Assurance Cell (IQAC)
 Shree Guru Gobind Singh Ji
 Government College Paonta Sahib
 Dist. Sirmour (H.P.)-173025

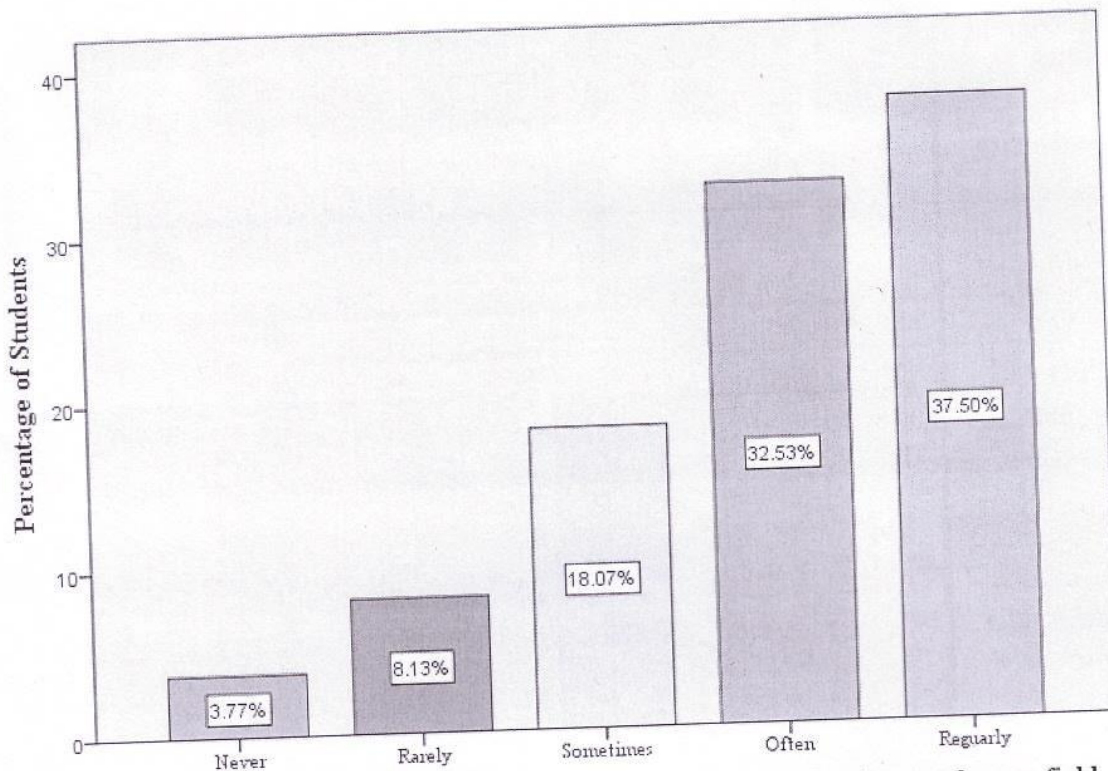


Pramol
Dr. PRAMOD PATIAL
 Principal
 Shree Guru Gobind Singh Ji
 Government College
 Paonta Sahib
 Dist. Sirmour (H.P.)-173025

7. The institute takes active interest in promoting internship student exchange, field visit opportunities for students.

Table No. 7 The institute takes active interest in promoting internship student exchange, field visit opportunities for students.

	Valid						Missing	Total
	Never	Rarely	Sometimes	Often	Regularly	Total	System	
Frequency	25	54	120	216	249	664	21	685
Percent	3.6	7.9	17.5	31.5	36.4	96.9	3.1	100.0
Weighted Mean Score								3.92



The institute takes active interest in promoting internship student exchange, field visit opportunities for students.

[Handwritten Signature]

Internal Quality Assurance Cell (IQAC)
Shree Guru Gobind Singh Ji
Government College Paonta Sahib
Dist. Sirmour (H.P.)-173025

[8]



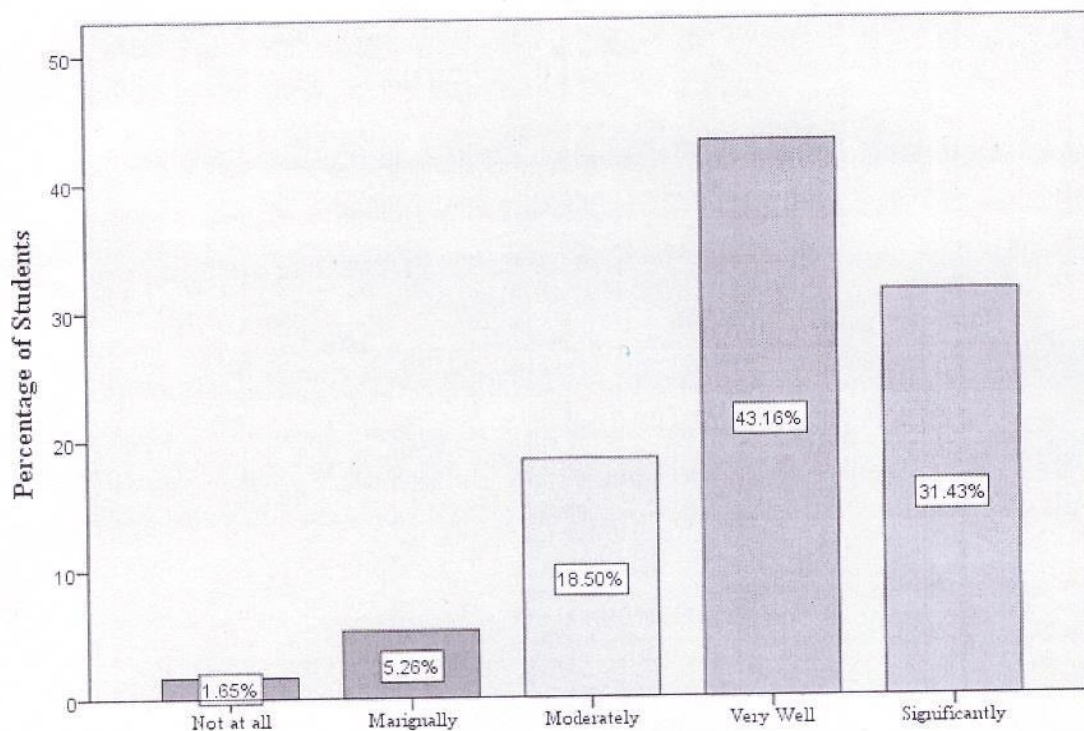
[Handwritten Signature]

Dr. PRAMOD PATIAL
Principal
Shree Guru Gobind Singh Ji
Government College
Paonta Sahib
Dist. Sirmour (H.P.)-173025

8. The teaching and mentoring process in your institution facilitates you in cognitive, social, and emotional growth.

Table No. 8 The teaching and mentoring process in your institution facilitates you in cognitive, social, and emotional growth.

	Valid						Missing	Total
	Not at all	Marginally	Moderately	Very Well	Significantly	Total	System	
Frequency	11	35	123	287	209	665	20	685
Percent	1.6	5.1	18.0	41.9	30.5	97.1	2.9	100.0
Weighted Mean Score								3.97



The teaching and mentoring process in your institution facilitates you in cognitive, social, and emotional growth.

Prate

Prate
 Internal Quality Assurance Cell (IQAC)
 Shree Guru Gobind Singh Ji
 Government College Paonta Sahib
 Dist. Sirmour (H.P.)-173025

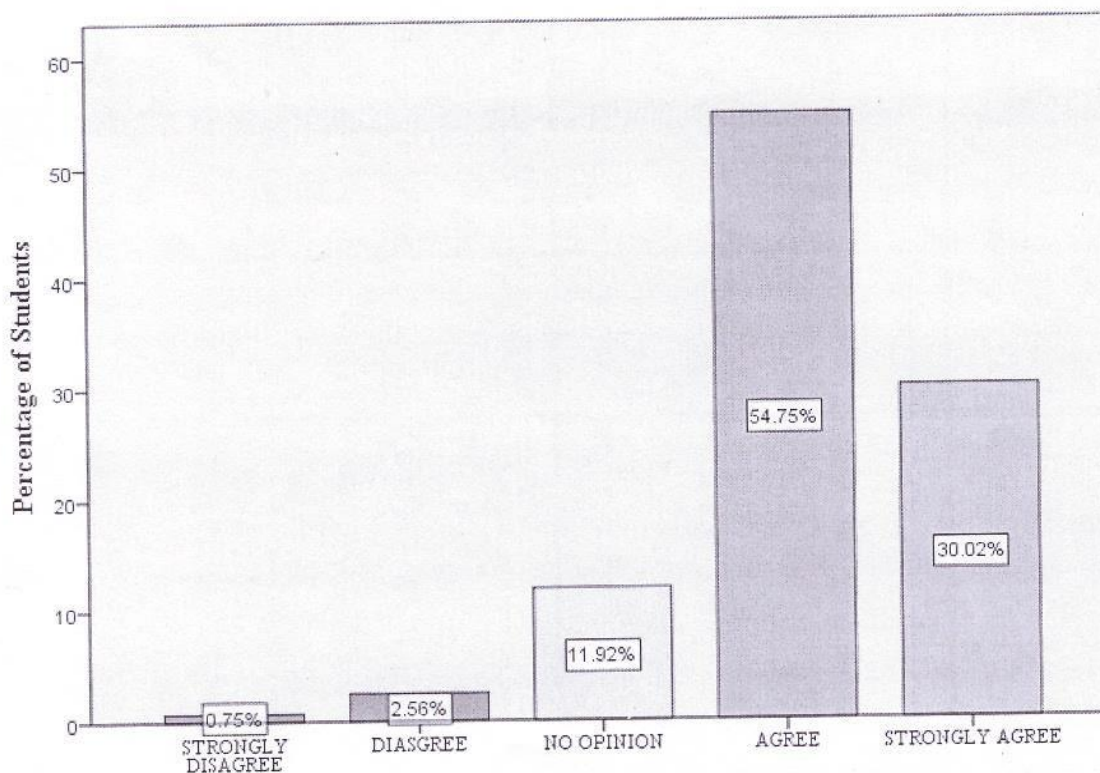


Dr. PRAMOD PATIAL
 Principal
 Shree Guru Gobind Singh Ji
 Government College
 Paonta Sahib
 Dist. Sirmour (H.P.)-173025

9. The institution provides multiple opportunities to learn and grow.

Table No. 9 The institution provides multiple opportunities to learn and grow.

	Valid						Missing	Total
	STRONGLY DISAGREE	DIASGREE	NO OPINION	AGREE	STRONGLY AGREE	Total	System	
Frequency	5	17	79	363	199	663	22	685
Percent	.7	2.5	11.5	53.0	29.1	96.8	3.2	100.0
Weighted Mean Score								4.11



The institution provides multiple opportunities to learn and grow.

Handwritten signature

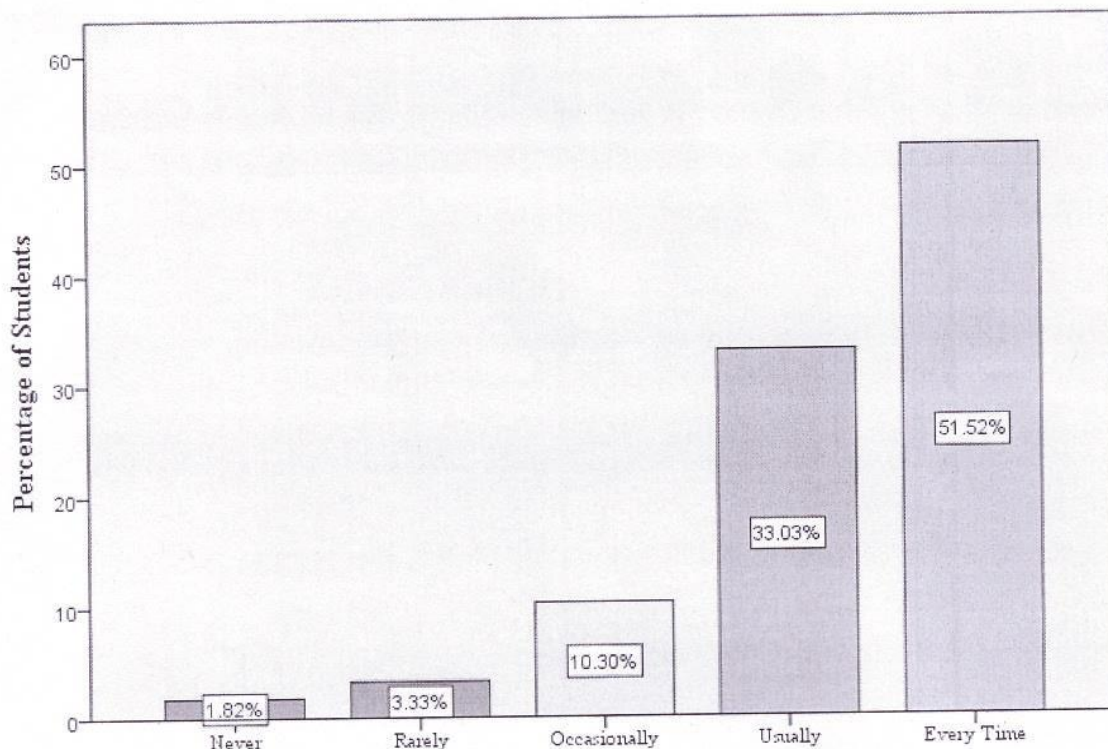
Dr. PRAMOD PATIAL
Principal
Shree Guru Gobind Singh Ji
Government College
Paonta Sahib
Dist. Sirmour (H.P.)-173025



10. Teachers inform you about your expected competencies, course outcomes and programme outcomes.

Table No. 10 Teachers inform you about your expected competencies, course outcomes and programme outcomes.

	Valid						Missing	Total
	Never	Rarely	Occasionally	Usually	Every Time	Total	System	
Frequency	12	22	68	218	340	660	25	685
Percent	1.8	3.2	9.9	31.8	49.6	96.4	3.6	100.0
Weighted Mean Score								4.29



Teachers inform you about your expected competencies, course outcomes and programme outcomes.

Prasad
 Internal Quality Assurance Cell (IQAC)
 Shree Guru-Gobind Singh Ji
 Government College Paonta Sahib
 Dist. Sirmour (H.P.)-173025

[11]

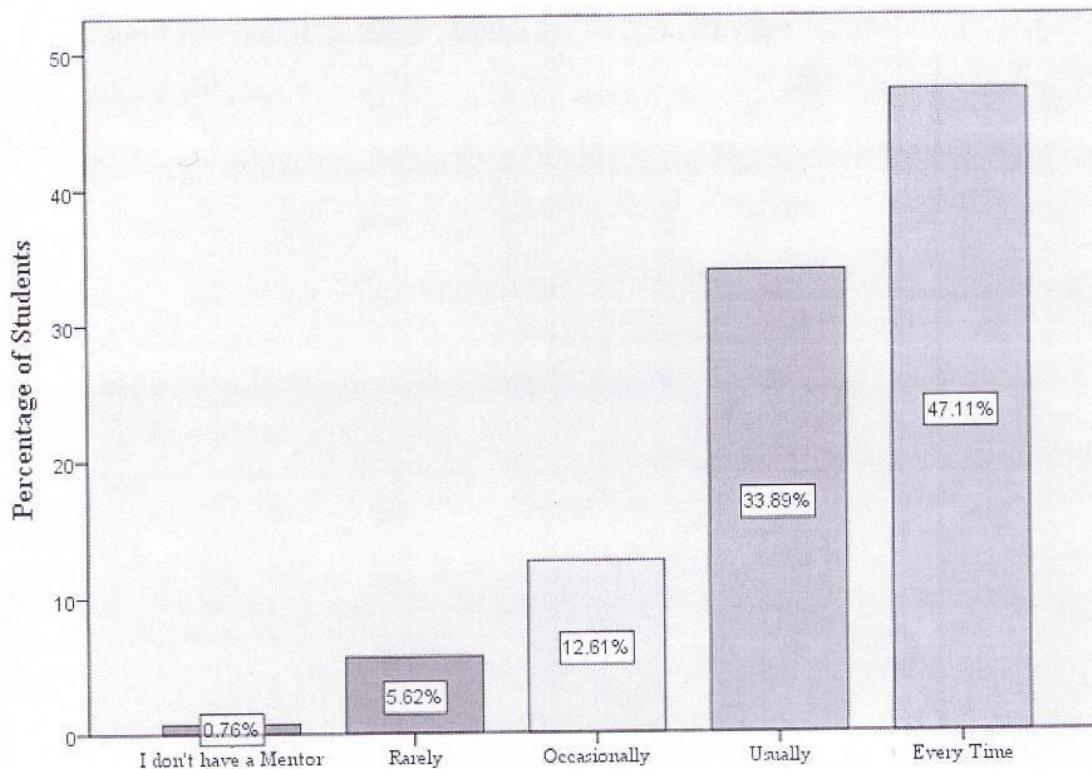


Prasad
Dr. PRAMOD PATIAL
 Principal
 Shree Guru Gobind Singh Ji
 Government College
 Paonta Sahib
 Dist. Sirmour (H.P.)-173025

11. Your mentor does a necessary follow-up with an assigned task to you.

Table No. 11 Your mentor does a necessary follow-up with an assigned task to you.

	Valid						Missing	Total
	I don't have a Mentor	Rarely	Occasionally	Usually	Every Time	Total	System	
Frequency	5	37	83	223	310	658	27	685
Percent	.7	5.4	12.1	32.6	45.3	96.1	3.9	100.0
Weighted Mean Score								4.21



Your mentor does a necessary follow-up with an assigned task to you.

[Handwritten Signature]

Internal Quality Assurance Cell (IQAC)
Shree Guru Gobind Singh Ji
Government College Paonta Sahib
Dist. Sirmour (H.P.)-173025



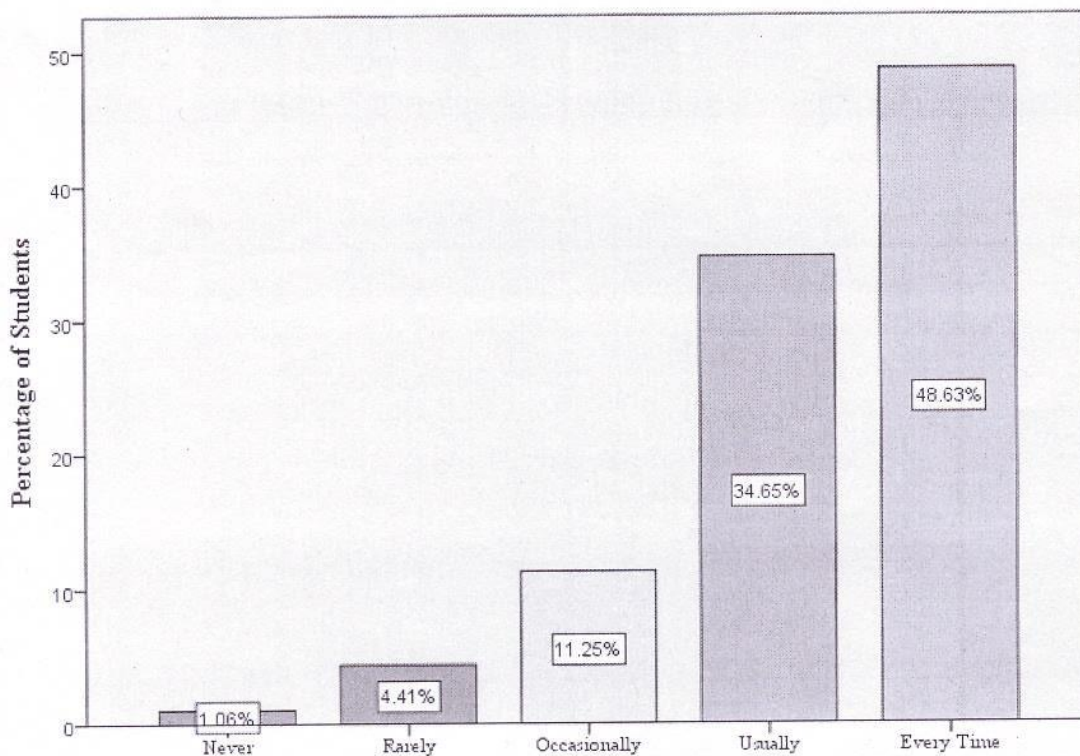
[Handwritten Signature]

Dr. PRAMOD PATIAL
Principal
Shree Guru Gobind Singh Ji
Government College
Paonta Sahib
Dist. Sirmour (H.P.)-173025

12. The teachers illustrate the concepts through examples and applications.

Table No. 12 The teachers illustrate the concepts through examples and applications.

	Valid						Missing	Total
	Never	Rarely	Occasionally	Usually	Every Time	Total	System	
Frequency	7	29	74	228	320	658	27	685
Percent	1.0	4.2	10.8	33.3	46.7	96.1	3.9	100.0
Weighted Mean Score								4.25



The teachers illustrate the concepts through examples and applications.

Handwritten signature
 Internal Quality Assurance Cell (IQAC)
 Shree Guru Gobind Singh Ji
 Government College Paonta Sahib
 Dist. Sirmour (H.P.)-173025

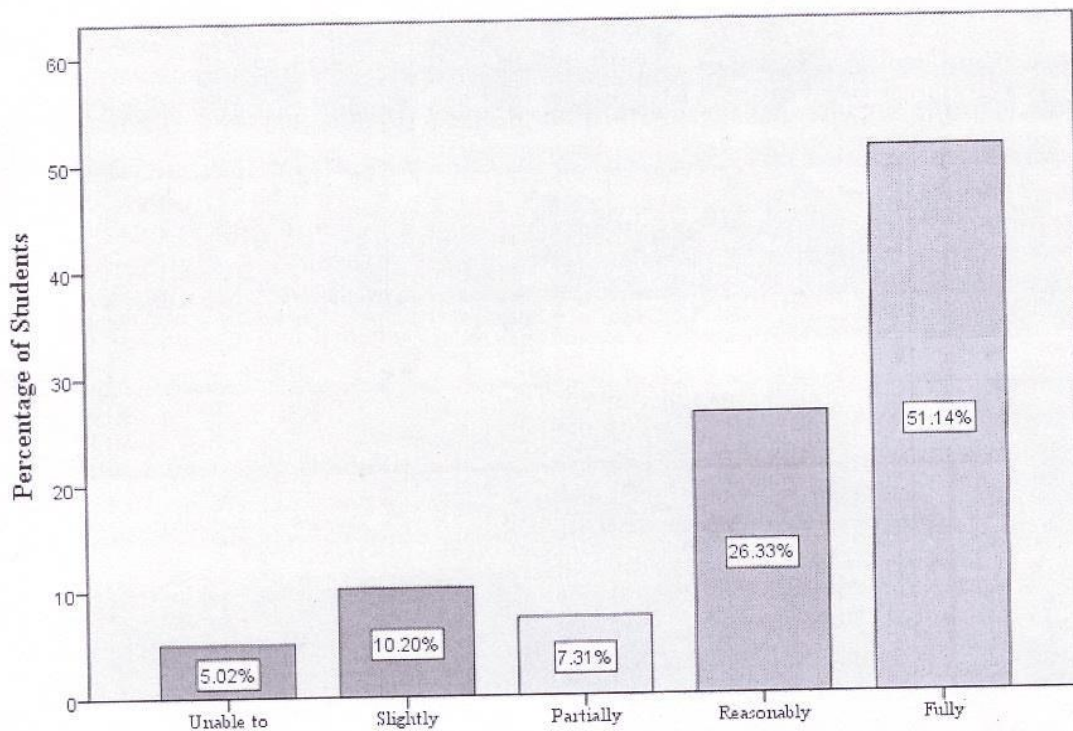


Handwritten signature
Dr. PRAMOD PATIAL
 Principal
 Shree Guru Gobind Singh Ji
 Government College
 Paonta Sahib
 Dist. Sirmour (H.P.)-173025

13. The teachers identify your strengths and encourage you with providing right level of challenges.

Table No. 13 The teachers identify your strengths and encourage you with providing right level of challenges.

	Valid						Missing	Total
	Unable to	Slightly	Partially	Reasonably	Fully	Total	System	
Frequency	33	67	48	173	336	657	28	685
Percent	4.8	9.8	7.0	25.3	49.1	95.9	4.1	100.0
Weighted Mean Score								4.08



The teachers identify your strengths and encourage you with providing right level of challenges.

Prasanna
 Internal Quality Assurance Cell (IQAC)
 Shree Guru Gobind Singh Ji
 Government College Paonta Sahib
 Dist. Sirmour (H.P.)-173025

[14]

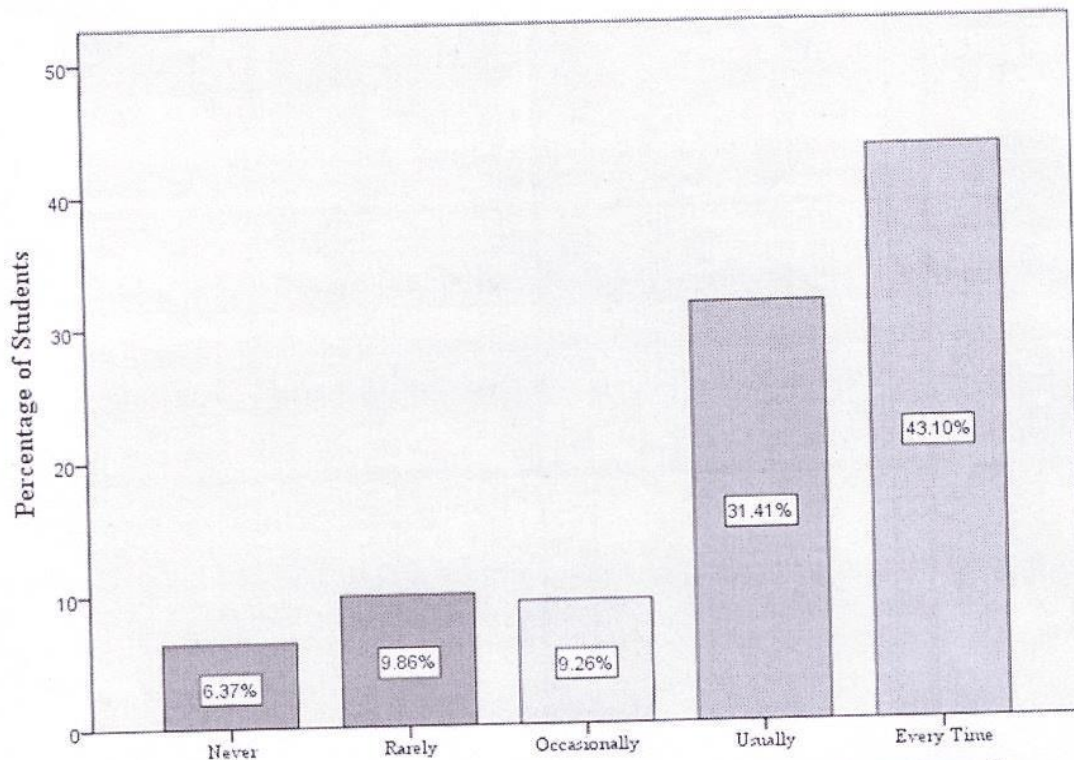


Prate
Dr. PRAMOD PATIAL
 Principal
 Shree Guru Gobind Singh Ji
 Government College
 Paonta Sahib
 Dist. Sirmour (H.P.)-173025

14. Teachers are able to identify your weaknesses and help you to overcome them.

Table No. 14 Teachers are able to identify your weaknesses and help you to overcome them.

	Valid						Missing	Total
	Never	Rarely	Occasionally	Usually	Every Time	Total	System	
Frequency	42	65	61	207	284	659	26	685
Percent	6.1	9.5	8.9	30.2	41.5	96.2	3.8	100.0
Weighted Mean Score								3.95



Teachers are able to identify your weaknesses and help you to overcome them.

[Handwritten Signature]

Internal Quality Assurance Cell (IQAC)
Shree Guru Gobind Singh Ji
Government College Paonta Sahib
Dist. Sirmour (H.P.)-173025



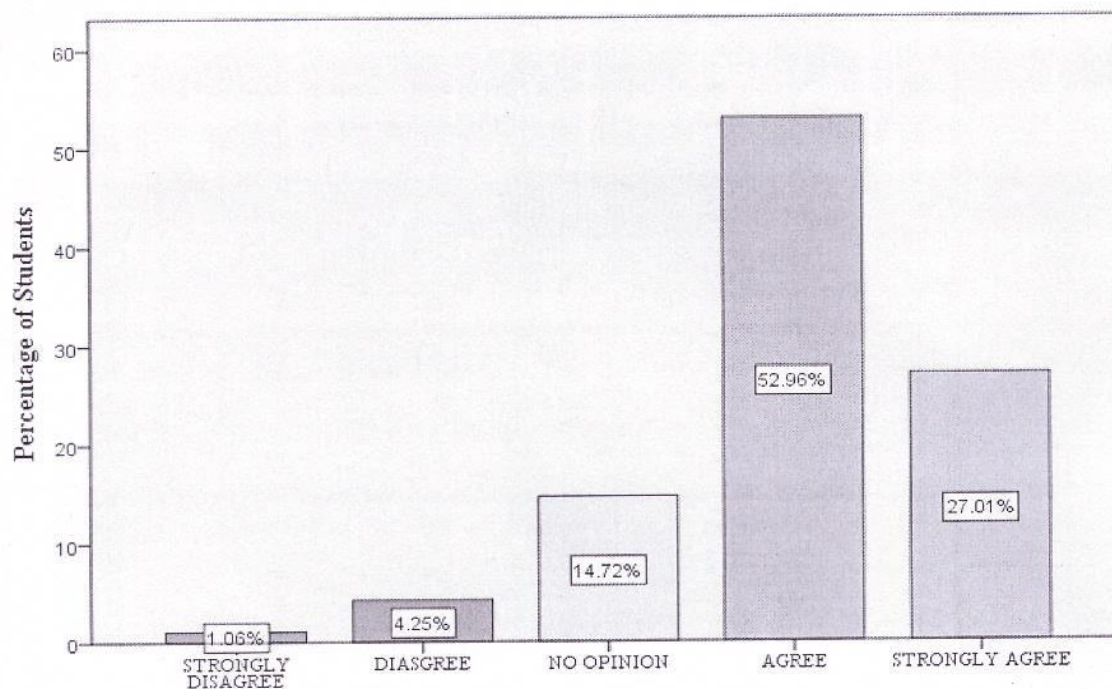
[Handwritten Signature]

Dr. PRAMOD PATIAL
Principal
Shree Guru Gobind Singh Ji
Government College
Paonta Sahib
Dist. Sirmour (H.P.)-173025

15. The institution makes effort to engage students in monitoring, review, and continuous quality improvement of the teaching learning process.

Table No. 15 The institution makes effort to engage students in monitoring, review, and continuous quality improvement of the teaching learning process.

	Valid						Missing	Total
	STRONGLY DISAGREE	DIASGREE	NO OPINION	AGREE	STRONGLY AGREE	Total	System	
Frequency	7	28	97	349	178	659	26	685
Percent	1.0	4.1	14.2	50.9	26.0	96.2	3.8	100.0
Weighted Mean Score								4.01



The institution makes effort to engage students in monitoring, review, and continuous quality improvement of the teaching learning process.

[Handwritten Signature]

Internal Quality Assurance Cell (IQAC)
Shree Guru Gobind Singh Ji
Government College Paonta Sahib
Dist. Sirmour (H.P.)-173025

[16]



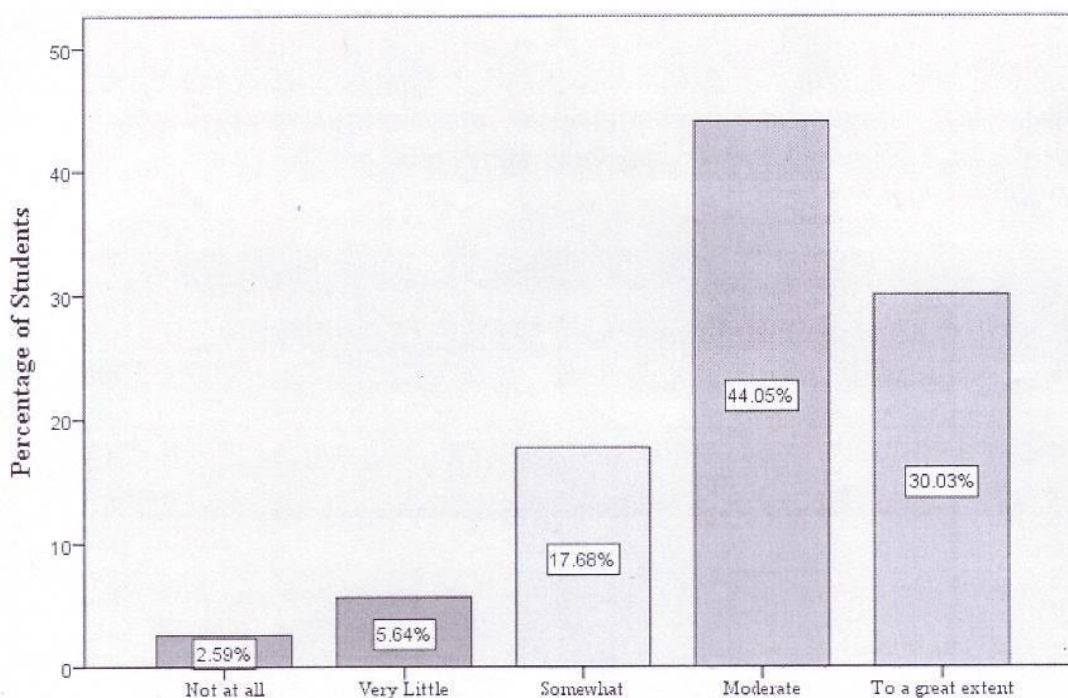
[Handwritten Signature]

Dr. PRAMOD PATIAL
Principal
Shree Guru Gobind Singh Ji
Government College
Paonta Sahib
Dist. Sirmour (H.P.)-173025

16. The institute/teachers use student centric methods, such as experiential learning, participative learning, and problem-solving methodologies for enhancing learning experiences.

Table No. 16 The institute/teachers use student centric methods, such as experiential learning, participative learning, and problem-solving methodologies for enhancing learning experiences.

	Valid						Missing	Total
	Not at all	Very Little	Somewhat	Moderate	To a great extent	Total	System	
Frequency	17	37	116	289	197	656	29	685
Percent	2.5	5.4	16.9	42.2	28.8	95.8	4.2	100.0
Weighted Mean Score								3.93



The institute/teachers use student centric methods, such as experiential learning, participative learning, and problem-solving methodologies for enhancing learning experiences.

Praveen

Internal Quality Assurance Cell (IQAC)
Shree Guru Gobind Singh Ji
Government College Paonta Sahib
Dist. Sirmour (H.P.)-173025

[17]



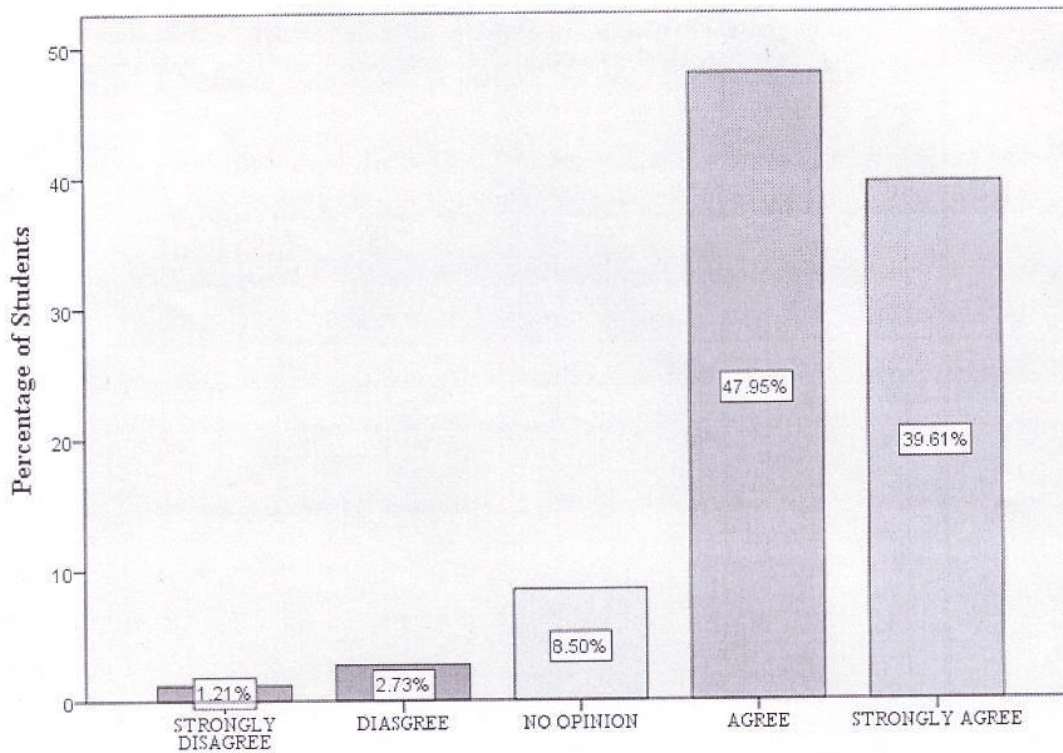
Pravir

Dr. PRAMOD PATIAL
Principal
Shree Guru Gobind Singh Ji
Government College
Paonta Sahib
Dist. Sirmour (H.P.)-173025

17. Teachers encourage you to participate in extra-curricular activities.

Table No. 17 Teachers encourage you to participate in extra-curricular activities.

	Valid						Missing	Total
	STRONGLY DISAGREE	DIASGREE	NO OPINION	AGREE	STRONGLY AGREE	Total	System	
Frequency	8	18	56	316	261	659	26	685
Percent	1.2	2.6	8.2	46.1	38.1	96.2	3.8	100.0
Weighted Mean Score								4.22

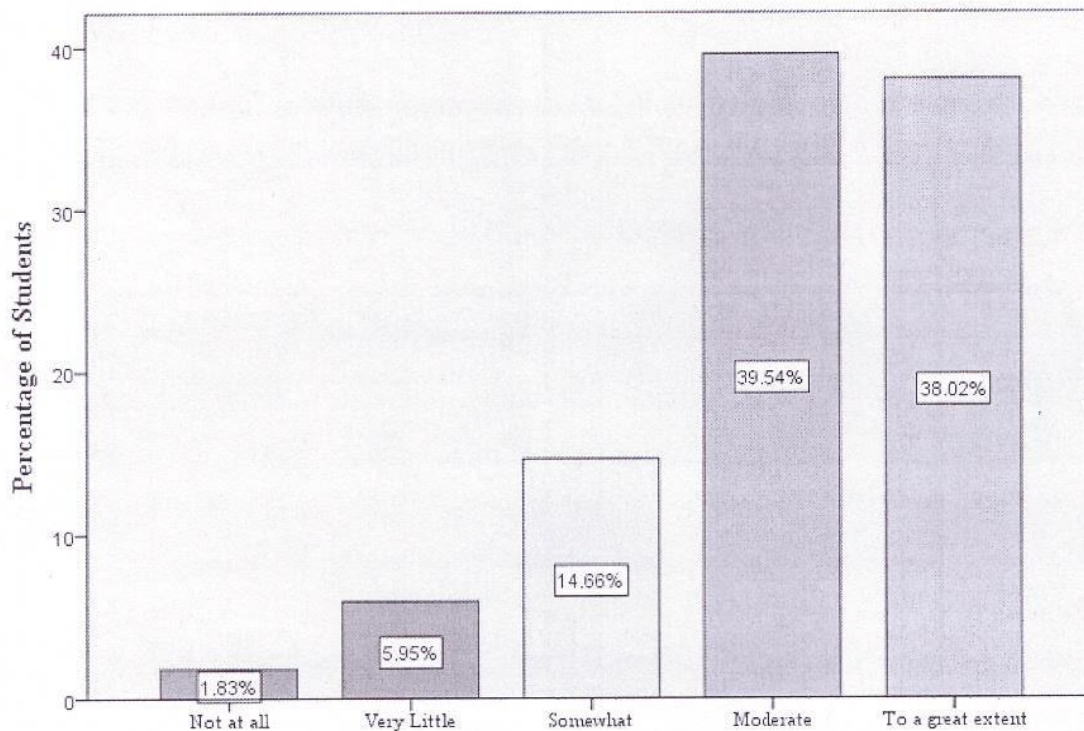


Teachers encourage you to participate in extra-curricular activities.

18. Efforts are made by the institute/ teachers to inculcate soft skills, life skills and employability skills to make you ready for the world of work.

Table No. 18 Efforts are made by the institute/ teachers to inculcate soft skills, life skills and employability skills to make you ready for the world of work.

	Valid						Missing	Total
	Not at all	Very Little	Somewhat	Moderate	To a great extent	Total	System	
Frequency	12	39	96	259	249	655	30	685
Percent	1.8	5.7	14.0	37.8	36.4	95.6	4.4	100.0
Weighted Mean Score								4.06

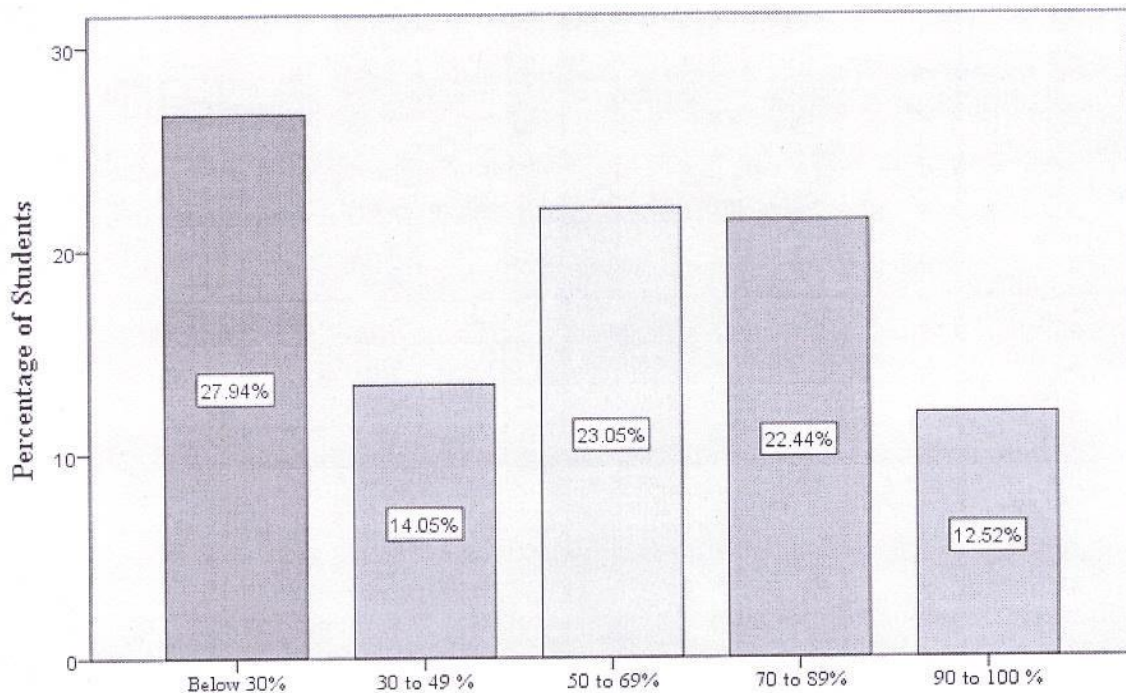


Efforts are made by the institute/ teachers to inculcate soft skills, life skills and employability skills to make you ready for the world of work.

19. What percentage of teachers use ICT tools such as LCD projector, multimedia, etc. while teaching?

Table No. 19 What percentage of teachers use ICT tools such as LCD projector, multimedia, etc. while teaching?

	Below 30%	30 to 49 %	50 to 69%	70 to 89%	90 to 100 %	Total
Frequency	183	92	151	147	82	685
Percent	26.7	13.4	22.0	21.5	12.0	100.0
Weighted Mean Score						4.29



What percentage of teachers use ICT tools such as LCD projector, multimedia, etc. while teaching?

[Signature]

Internal Quality Assurance Cell (IQAC)
Shree Guru Gobind Singh Ji
Government College Paonta Sahib
Dist. Sirmour (H.P.)-173025

[20]



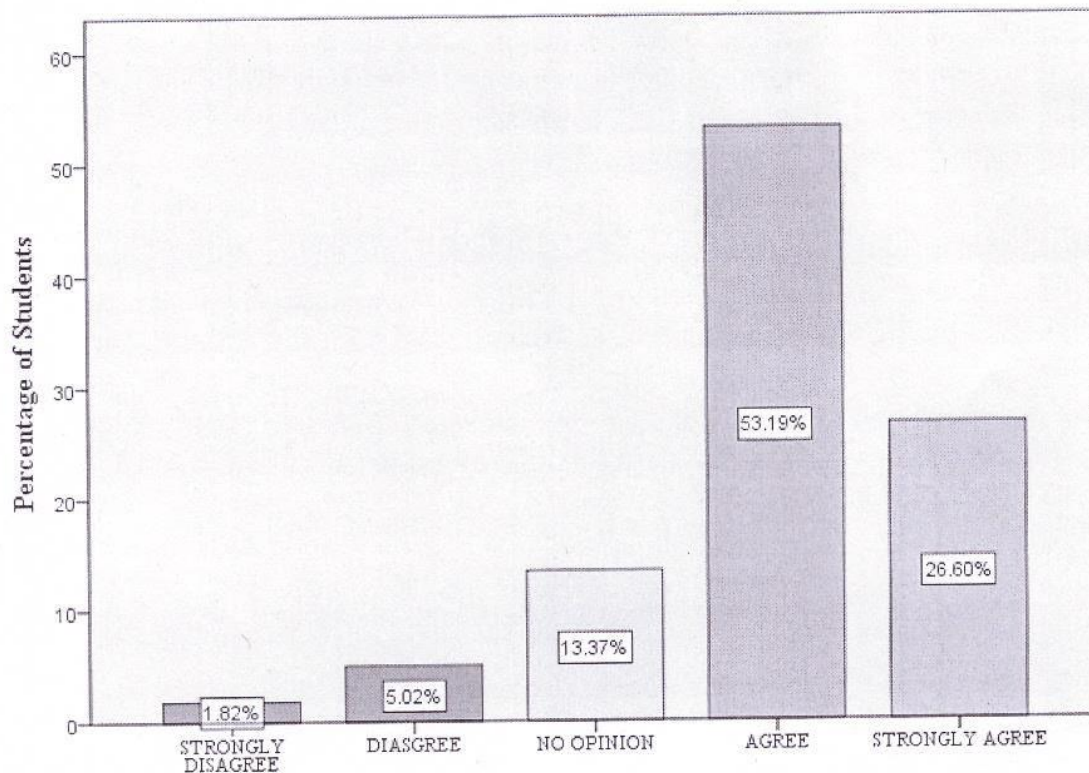
[Signature]

Dr. PRAMOD PATIAL
Principal
Shree Guru Gobind Singh Ji
Government College
Paonta Sahib
Dist. Sirmour (H.P.)-173025

20. The overall quality of teaching-learning process in your institute is very good.

Table No. 20 The overall quality of teaching-learning process in your institute is very good.

	Valid						Missing	Total
	STRONGLY DISAGREE	DIASGREE	NO OPINION	AGREE	STRONGLY AGREE	Total	System	
Frequency	12	33	88	350	175	658	27	685
Percent	1.8	4.8	12.8	51.1	25.5	96.1	3.9	100.0
Weighted Mean Score								3.98



The overall quality of teaching-learning process in your institute is very good.

Handwritten signature



Handwritten signature

21. Conclusion:

Following table and graph presents weighted Mean Score of questions.

Sr. No	Questions	Weighted Mean Score
1.	How much of the syllabus was covered in the class	3.98
2.	How well did the teachers prepare for the classes?	4.16
3.	How well were the teachers able to communicate?	4.29
4.	The teacher's approach to teaching can best be described as:	3.77
5.	Fairness of the internal evaluation process by the teachers.	4.31
6.	Was your performance in assignments discussed with you?	3.96
7.	The institute takes active interest in promoting internship student exchange, field visit opportunities for students.	3.92
8.	The teaching and mentoring process in your institution facilitates you in cognitive, social, and emotional growth.	3.97
9.	The institution provides multiple opportunities to learn and grow.	4.11
10.	Teachers inform you about your expected competencies, course outcomes and programme outcomes.	4.29
11.	Your mentor does a necessary follow-up with an assigned task to you.	4.21
12.	The teachers illustrate the concepts through examples and applications.	4.25
13.	The teachers identify your strengths and encourage you with providing right level of challenges.	4.08
14.	Teachers are able to identify your weaknesses and help you to overcome them.	3.95
15.	The institution makes effort to engage students in monitoring, review, and continuous quality improvement of the teaching learning process.	4.01
16.	The institute/teachers use student centric methods, such as experiential learning, participative learning, and problem-solving methodologies for enhancing learning experiences.	3.93
17.	Teachers encourage you to participate in extra-curricular activities.	4.22
18.	Efforts are made by the institute/ teachers to inculcate soft skills, life skills and employability skills to make you ready for the world of work.	4.06
19.	What percentage of teachers use ICT tools such as LCD projector, multimedia, etc. while teaching?	4.29

[22]



Prasad
Internal Quality Assurance Cell (IQAC)
Shree Guru Gobind Singh Ji
Government College Paonta Sahib
Dist. Sirmour (H.P.)-173025

Prasad
Dr. PRAMOD PATIAL
Principal
Shree Guru Gobind Singh Ji
Government College
Paonta Sahib
Dist Sirmour (H.P.)-173025

20.	The overall quality of teaching-learning process in your institute is very good.	3.98
Total Mean Score		4.08

